



# FM - Series Multi-Level Float Switches

## FM - Series Multi-Level Float Switches

Dependable and rugged 316 Stainless Steel float level switches for replacement or custom applications.

### FM20-xxxx 2" Diameter 316SS Float Switch

These larger, more buoyant floats are perfect for years of corrosive resistant service. Configurable for 1 to 5 levels, these switches may be used to control pumps, alarms or indicate general fluid levels.

### FM22-xxxx 1 1/4" Diameter Buna Float and SS Stem

These highly buoyant floats are ideal for heavy equipment, generators and fluid recovery involving lubricating oils, fuels and wastewater. Easily configured for oil water interface detection.

Part Number	Switch Type	Maximum Switching Current	Maximum Switching Voltage	Maximum Temperature	Maximum Pressure	Specific Gravity
<b>FM20-xxxx</b>	50 watt	.5 Amps	250 VDC	150 C	250 psig	.60
<b>FM22-xxxx</b>	50 watt	.5 Amps	250 VDC	120 C	150 psig	.50

**Standard Features:**

- 50 Watt Resistive SPST Switches
- 2.5" min. required between levels
- Up to 5 levels, 10' long

**Other Available Switches:** (UL rated for resistive loads)

- 100 Watt, Full Size SPST, Switch 3Amps (3 levels)
- 100 Watt, Full Size SPDT, Switch 3Amps (3 levels)Up



### FM10-xxxx 1" Diameter, SS Multi Level Float Switch

This durable design is ideal for corrosion resistant applications in restrictive spaces

### FM11-xxxx 1" Diameter PP Float with SS Stem

The Polypropylene float makes this ideal for general use and potable water applications.

### FM12-xxxx 1" Diameter Buna Float with SS Stem

This miniature multi-level is ideal for petroleum products, hydraulic oils and wastewaters.

Part Number	Switch Type	Maximum Switching Current	Maximum Switching Voltage	Maximum Temperature	Maximum Pressure	Specific Gravity
<b>FM10-xxxx</b>	50 watt	.5 Amps	250 VDC	150 C	250 psig	.60
<b>FM11-xxxx</b>	50 watt	.5 Amps	250 VDC	105 C	100 psig	.70
<b>FM12-xxxx</b>	50 watt	.5 Amps	250 VDC	120 C	150 psig	.50

**Standard Features:**

- 50 Watt Resistive SPST Switches
- 1.5" min. required between levels
- Up to 4 levels, 6' long



**Notes:**

- Standard fittings, flanges or custom mounting configurations available. Use an adjustable compression fitting to provide more flexibility.
- Temperature devices can be incorporated with your float switch to reduce tank intrusion and assembly costs. See Combination sensors.
- Other switch types and materials available. Contact our technical sales department or submit a custom application



# FM - Series Multi-Level Float Switches

Please fill in configuration sheet and application specifications and return for quote or order.

## Select Part

**FM20** 2" 316 Stainless Steel  
(Requires 2.1" hole for external mount)

**FM22** 1 1/4" Buna-N / SS  
(Requires 1.3" hole for external mount)

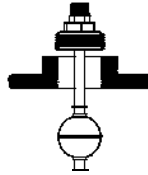
**FM10** 1" 316 Stainless Steel

**FM11** 1" PP / SS

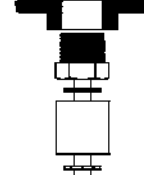
**FM12** 1" Buna-N / SS

## Mounting Type

External



Internal



## Standard Fittings

Pipe Plugs	<input type="checkbox"/> 1/4" npt	<input type="checkbox"/> 1/2" npt	<input type="checkbox"/> 1" npt	<input type="checkbox"/> 2" npt
Bulkhead	<input type="checkbox"/> 1/2" - 13	<input type="checkbox"/> 3/4" - 10		
150# Flange	<input type="checkbox"/> 1"	<input type="checkbox"/> 3"		
Adjustable compression fitting	<input type="checkbox"/>	Adjustability + _____"		

Other: \_\_\_\_\_

## Float Stops

300 Series SS Grip Rings  
(Standard)

316SS Collars with Set Screw

## Wire Type

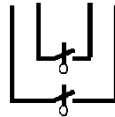
\_\_\_\_\_ inches  
22 Awg. Teflon (Standard)

## Lead Length

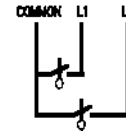
\_\_\_\_\_ inches  
24" (Standard)

## Wiring Configuration

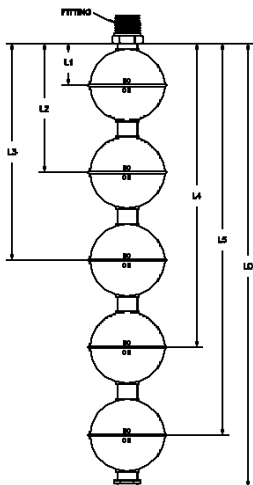
Separate  
(Standard)



Common



**NOTE:** Switch Points measured from bottom of mounting surface to switch actuation at float center. Please check Normally Closed (NC), Normally Open (NO) or Single Pole Double Through (SPDT). (FM20- 5 levels Max, FM10- 4 Levels Max.)



L1	_____ "	<input type="checkbox"/> NC / <input type="checkbox"/> NO / <input type="checkbox"/> SPDT
L2	_____ "	<input type="checkbox"/> NC / <input type="checkbox"/> NO / <input type="checkbox"/> SPDT
L3	_____ "	<input type="checkbox"/> NC / <input type="checkbox"/> NO / <input type="checkbox"/> SPDT
L4	_____ "	<input type="checkbox"/> NC / <input type="checkbox"/> NO
L5	_____ "	<input type="checkbox"/> NC / <input type="checkbox"/> NO
L0	_____ "	Length Overall (+1.5" for FM20, +1" for FM10, Unless Specified)

- FM20 and FM22 Require 2.5" min. between levels
- FM10,11, and 12 Require 1.5" min. between levels
- Other switches and options available, please contact us or submit your requirements using our Application Specifications Sheet



# FM - Series Multi-Level Float Switches

## Application Specification Sheet

**Company:**

**Address:**

**City:** \_\_\_\_\_ **State:** \_\_\_\_\_ **Zip:** \_\_\_\_\_

**Contact:**

**Tel:** \_\_\_\_\_ **Fax:** \_\_\_\_\_

**E-Mail:**

**Application Description:**

**Fluid Type:** \_\_\_\_\_ **Temp:** \_\_\_\_\_ [ ]C / [ ]F **Pressure:** \_\_\_\_\_ psig

**Tank or Contact Materials:**

**Electrical Device or Output to be controlled:**

**Voltage:**

**Power:**

**Notes and Special Requirements:**

**Estimated Volume:**

**Price Target:**

**SMD Fluid Controls, Inc.**  
55 Barnes Park Road North  
Wallingford CT 06492

Tel: (203)-294-5800

[www.Fluidswitch.com](http://www.Fluidswitch.com)  
[Solutions@Fluidswitch.com](mailto:Solutions@Fluidswitch.com)  
Fax: (203)-265-0544